

Bathrooms

What's your style?

Well Designed Bathrooms

- 1. Fairly easy to clean
- 2. Bathtub- How much do you use it?
- 3. Storage Space- What are your options?
- 4. Lighting options
- 5. Flooring options- carpet, tile, wood, linoleum- cleaning
- 6. Windows- Large, open, glass blocks, etc.

Location, Location , Location

- Bathrooms need to be located near the living areas of the home as well as the sleeping areas.
- Size depends on number of people using the bathroom and the activities that will take place in there.

Types of Bathrooms

- Full Bathroom
 - Includes a sink, a toilet, and a tub with or without a shower.



Types of Bathrooms



- **Three-Quarters Bathroom**
 - Includes a sink, toilet and a shower.

Types of Bathrooms

- Half Bathroom
 - Includes only a sink and a toilet.

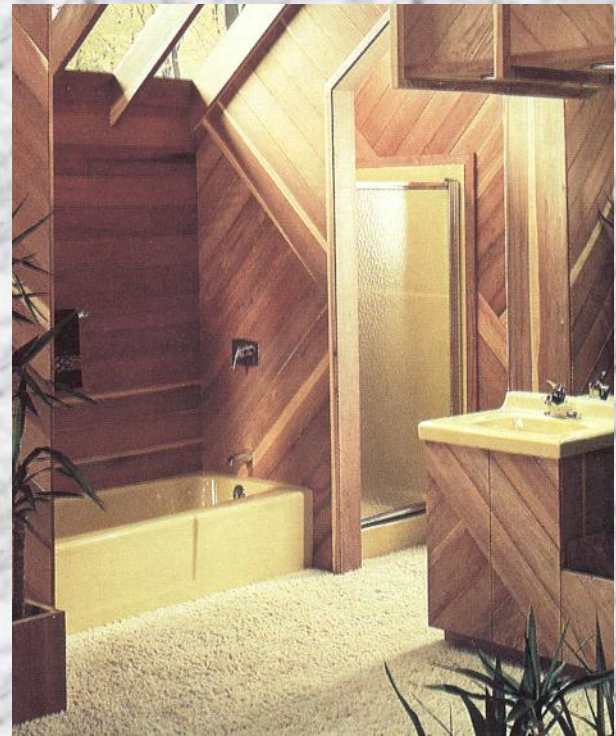


Types of Bathtubs

- Many sizes, shapes and colors
- Range in size from 54-72” L and 28-32” W
- Clearance 30-42” between tub and opposite wall
- Available with different features
 - Shower head
 - Grab rails
 - Wide ledges
 - Non-skid bottoms

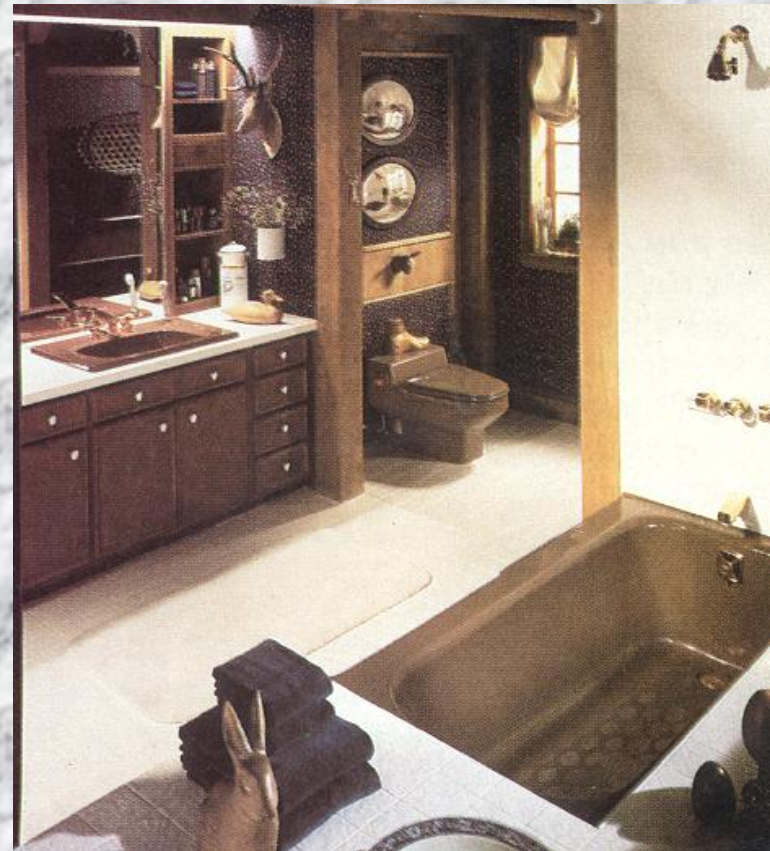
Types of Bathroom Sinks

- Vanity base
- Wall hanging unit
- Twin lavatories available
- Common size is 18”



Storage Options

- Needed for:
 - Grooming supplies
 - medications
 - Grooming appliances
 - Towels
 - Washcloths



Types of Toilets

- Wall Mounted
- Floor Mounted
- They come in various shapes, sizes and colors.
- Clearance 15” from center of stool on the sides and 24” in the front of the stool.

